

**CURTISS -
WRIGHT**



Subsea Canned Motor Electric Submersible Pump

As Tough As The Service

Designed and Built for Reliability

Subsea Canned Motor ESP

- First ever barrier fluid-less ESP for long life
- 1750 HP, 30-65 Hz design for operational flexibility
- Built with corrosion resistant alloys for offshore durability
- No dielectric fluid to top off for easier installation

Hermetically Sealed Stator

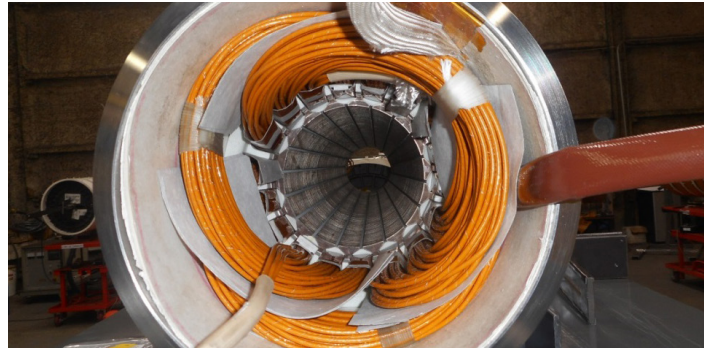
- Dry, 1 ATM environment for electrical windings
- High-temperature insulation system
- No protector seal section needed
- Field proven process lubricated bearing technology

Gas Tolerant Pump

- Operating range of 10,000 to 45,000 bpd
- Multi-stage, gas tolerant design (40% GVF)
- Continuous operation at elevated viscosities
- Self-leveling, process lubricated thrust bearing

Robust Power Connectors

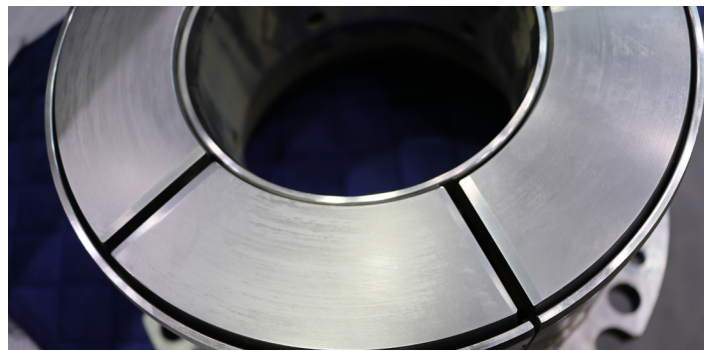
- Metal sealed motor connectors – no pothead or elastomers
- Industry's only SEPS qualified ESP connectors



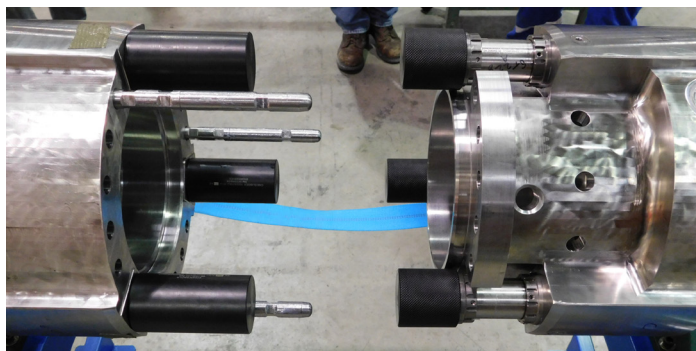
Wound Stator



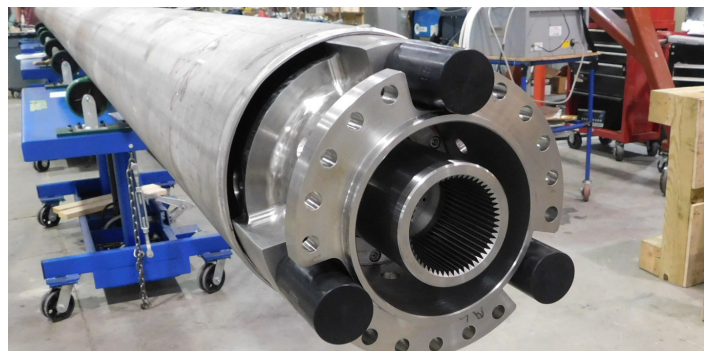
Canned Stator



Thrust Bearings



Motor Power Connectors

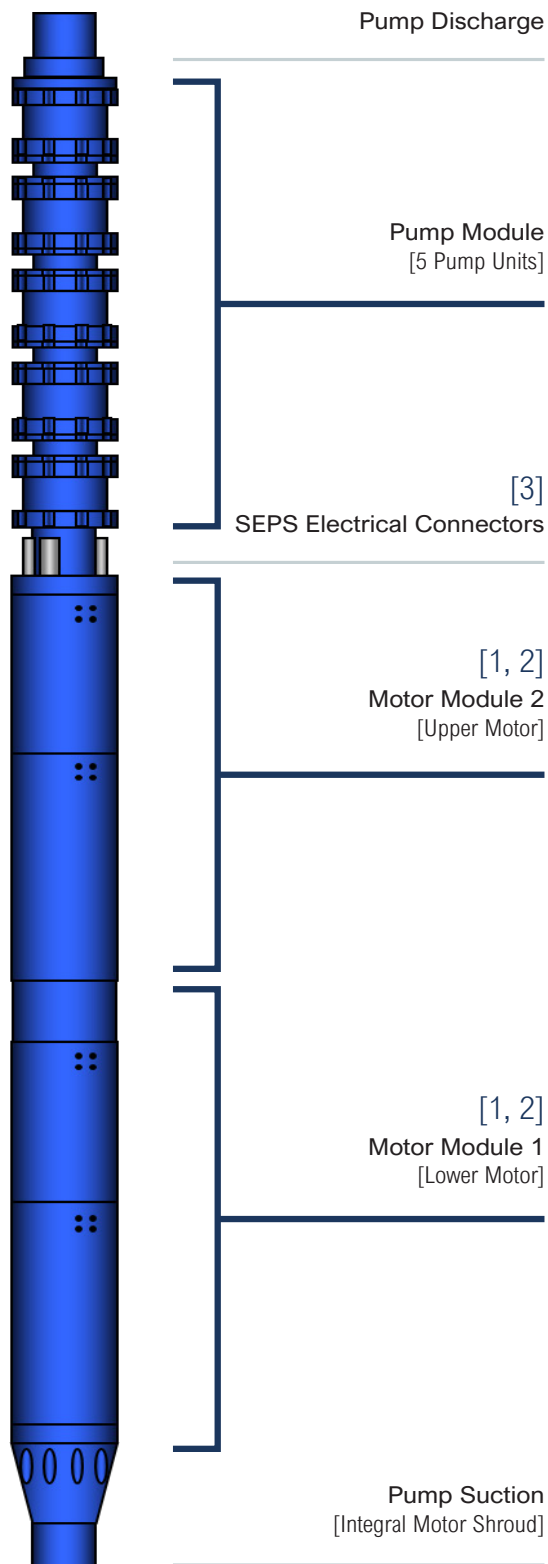


Shrouded Motor Module

Hermetically-Sealed Motor

Eliminates Mechanical Seals

Subsea Canned Motor ESP



Canned Motor [1]

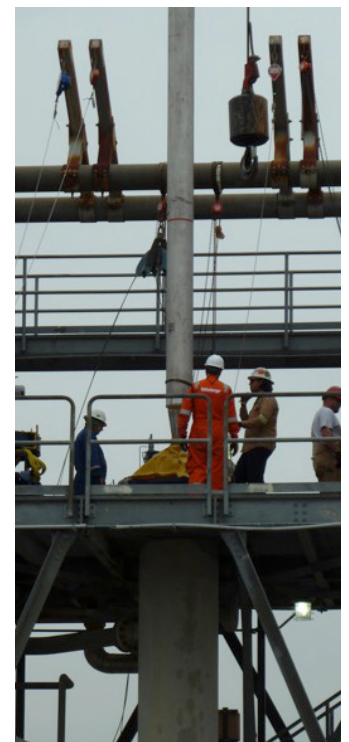
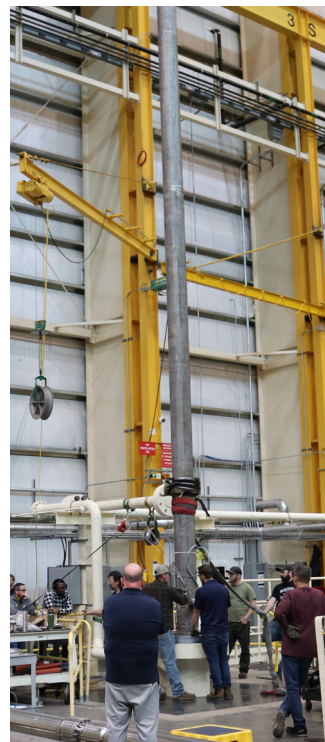
- Eliminates the need for a shaft seal and barrier fluid for the motor
- Maintains insulation system in a dry, 1 atm environment providing inherent protection to motor insulation and rotor bars for life of the unit

Potted Wound Stator [2]

- Field proven high temperature insulation system (200°C for 40 years continuously)
- Designed and factory tested to withstand voltage spikes

Penetrator Connector [3]

- Designed & qualified per SEPS-1001 industry standard for subsea pumps
- Uses metal-to-metal seal to prevent process fluid ingress into motor



Next-Level Reliability

Engineered for Offshore Service



ELECTRO-MECHANICAL SYSTEMS

1000 Wright Way
Cheswick, PA 15024

T: (+1) 724.275.5000

E: EMD-RFI@curtisswright.com

W: curtisswright.com/subsea-oil-and-gas

